

HPLC 6000

HPLC System

Description

NWSPEC HPLC 6000 UV-VIS: Cost-Effective, Reliable, and Compliant.

This HPLC system offers accurate UV-Vis detection and robust pumping for diverse analytical needs. It's designed for ease of use with intuitive software, and ensures data integrity with GMP/GLP compliance, including audit trails and e-signatures. Features versatile solvent handling (Isocratic, Binary, Quaternary*) and streamlined workflows.



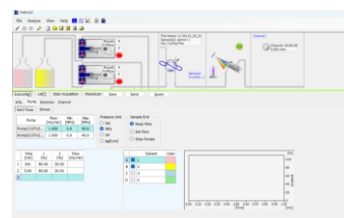
Features

- **Solvent Versatility:** Isocratic, Binary & Quaternary* Systems
- **Dependable Performance:** High-Quality & Reliable
- **Streamlined Workflow:** Minimize Training, Improved Efficiency
- **Accurate Measurements:** High Wavelength Accuracy
- **Sensitive Detection:** High Sensitivity
- **Wide Quantification Range:** Wide Linear Range
- **Enhanced Detection:** Unique Pool Structure
- **Flexible Wavelength Programming:**
Wavelength Scanning and Time-Programmed
- **Automated Sampling:** Integrated Automatic Sampler Control
- **Safety Assurance:** Solvent Alarm Function
- **System Integration:** Compatible with Any Liquid Pump
- **Simplified Maintenance:** Easy Service for Wetted Parts
- **Long-Term Reliability:** Long Life, Replaceable Deuterium Lamp
- **High-Speed Separations:** Supports Ultra-High Pressure
- **Unattended Operation:** Advanced Automation Capabilities

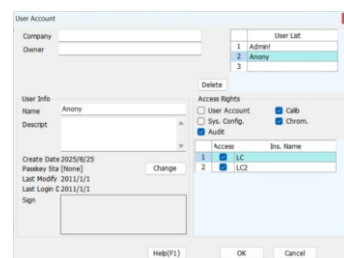
The function marked with "*" is only supported by HPLC8000.

Clarify Software

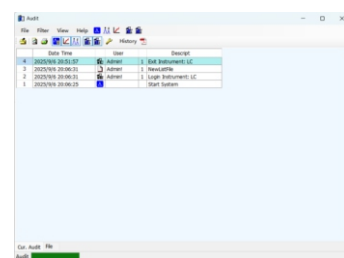
- **Intuitive User Interface:** The clear and straightforward interface provides easy access to all functions
- **Dual-Channel Operation:** Simultaneously connect and acquire data from two instruments (LC/GC)
- **Comprehensive Instrument Configuration:** Save instrument settings as configuration files for easy recall and review
- **Advanced Data Processing:** Full suite of data processing tools including signal-to-noise ratio (S/N) viewing, manual integration, and customizable result displays
- **System Suitability Testing (SST):** Performs all necessary calculations for SST as per pharmacopeia guidelines, including area, plate count, and resolution
- **Statistical Data Analysis:** Automatically calculates mean, relative deviation, and %RSD for multiple chromatograms
- **Complete Audit Trail:** Tracks all data modifications, preserving original data integrity while recording all changes
- **Electronic Signatures and Records:** Supports electronic signatures and records for full regulatory compliance



Clarify Software



User Account



Audit Trail

Applications



Pharmaceutical



Biopharmaceutical



Food & Beverage



Environmental



Chemical /
Petrochemical



Clinical / Diagnostics



Metabolomics
Research, Academia
/ Research



Cosmetics

Specification

LC Liquid Pump	
Infusion way	Series dual-plunger pump
Flow Rates	0.001 ~9.999 ml/min
Max. Pressure	6000 psi
Pressure Accuracy	± 2%
Flow Accuracy	≤0.5%
Flow Precision	≤0.2% RSD
Pulsation	<15psi from 600 to 1,600 psi, Flow 1mL/min
Operating Temperature	4~40°C
Weight	11 kg
Dimensions	1130H x 260W x 420 D, (mm)
UV-VIS Spectrophotometric Detector	
Wavelength	190-700 nm
Wavelength Accuracy	≤1 nm
Wavelength Reproducibility	≤± 0.1 nm
Spectral bandwidth	6 nm
Flow pool volume	8 μ L
Optical path	10 mm
Dynamic Noise	≤± 0.75×10 ⁻⁵ AU (Methanol, 1ml/min, 254nm, 20°C)
Static Noise	≤± 0.5×10 ⁻⁵ AU(Empty pool, Response time 1 s, 20 °C)
Dynamic Drifting	≤± 1×10 ⁻⁴ AU (Methanol, 1ml/min, 254nm, 20°C)
Static Drifting	≤± 0.5×10 ⁻⁴ AU(Empty pool, Response time 1 s, 20 °C)
Linear range	≥10 ⁴
Minimum detectable concentration	≤4×10 ⁻⁹ g/mL (Naphthalene/Methanol solution)
Qualitative repeatability	RSD ≤ 0.1%
Weight	11 kg
Dimensions	130H x 260W x 420 D (mm)

