

## Effects of Flow Rate on Plate Number (YS-50)

Although the optimal flow rate is 0.8 or less mL/min, there are few falls of theoretical plate number at 1.0 mL/min, and since  $\text{Ca}^{2+}$  can be analyzed within 20 minutes, by general cation analysis using IC YS-50, Shodex recommends to set flow rate below to 1.0mL/min.

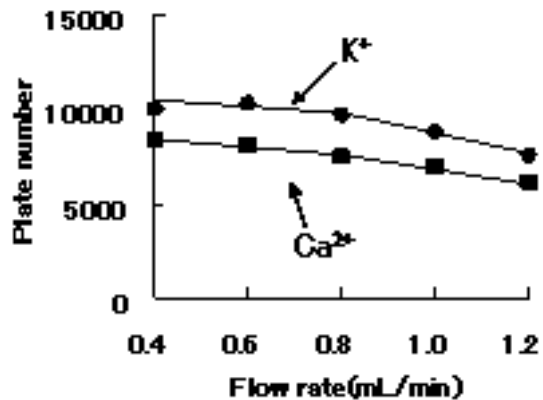
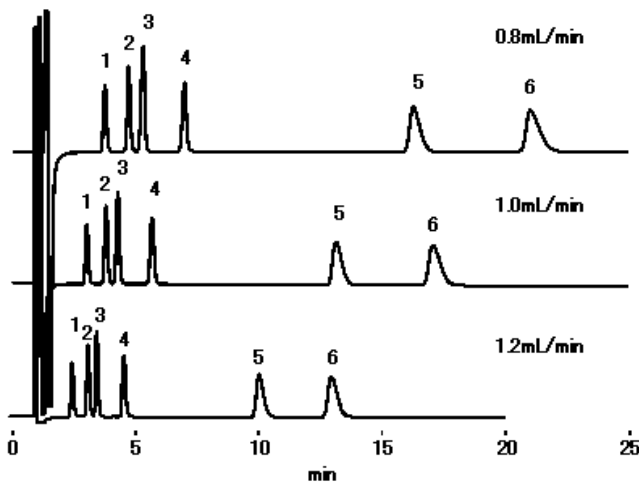
### Chromatographic Conditions:

**Column:** Shodex IC YS-50 (4.6mmI.D. x 125mm)

**Eluent:** 4mM Methanesulfonic acid aq.

**Detector:** Non-suppressed conductivity

**Column temp.:** 40°C



\*Sample : 10μL

1. Li<sup>+</sup> 2ppm
2. Na<sup>+</sup> 10ppm
3. NH<sub>4</sub><sup>+</sup> 10ppm
4. K<sup>+</sup> 20ppm
5. Mg<sup>2+</sup> 10ppm
6. Ca<sup>2+</sup> 20ppm