

Analyzing Cations and Alkylamines with IC YS-50 column

Cation standards and alkylamines can be analyzed simultaneously with IC YS-50.

Chromatographic Conditions:

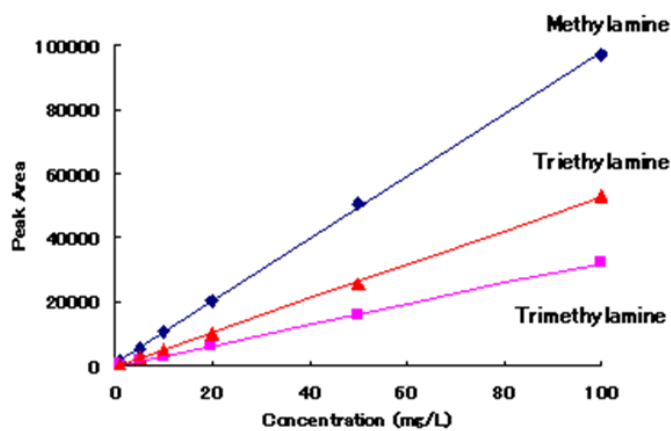
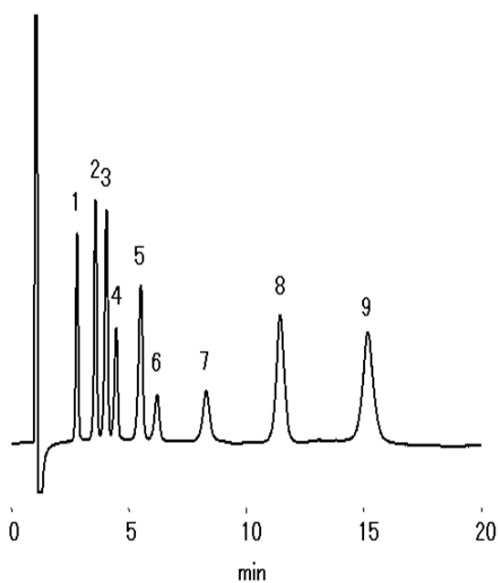
Column: Shodex IC YS-50 (4.6 mm I.D. x 125 mm)

Eluent: 4 mM Methanesulfonic acid aq.

Flow rate: 1.0 mL/min

Detector: Non-suppressed conductivity

Column temp.: 40 °C



Coefficient of determination (R^2) (1 to 100 mg/L)	
Methylamine	0.9997
Trimethylamine	0.9999
Triethylamine	0.9997